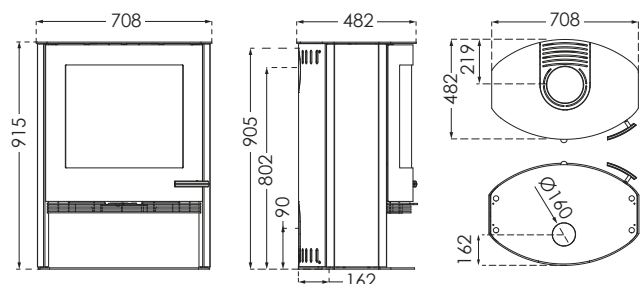


TT22 SERIES TECHNICAL SPECIFICATIONS

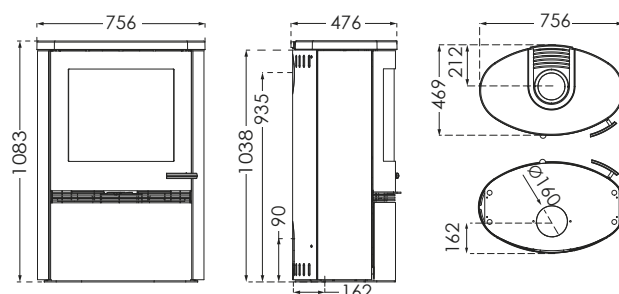
TT22

Combustion chamber W/D: 570/300
Weight in kg: 159



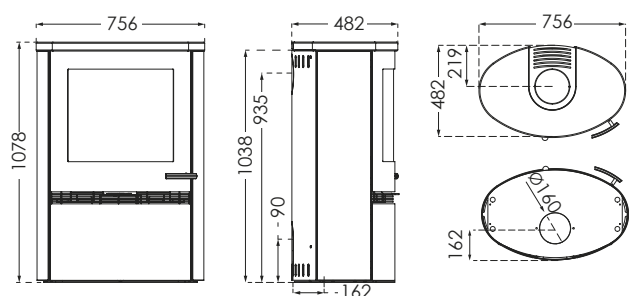
TT22H

Combustion chamber W/D: 570/300
Weight in kg: 175



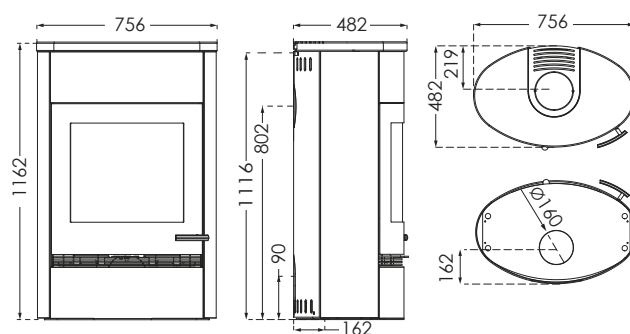
TT22HS*

Combustion chamber W/D: 570/300
Weight in kg: 218/236



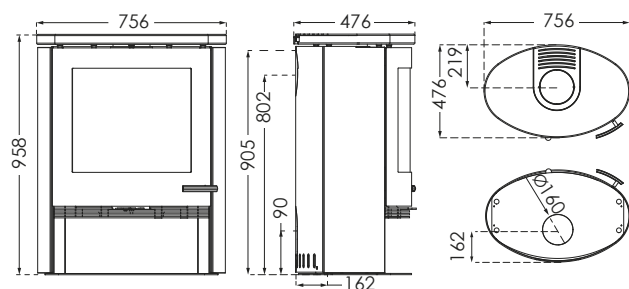
TT22HST

Combustion chamber W/D: 570/300
Weight in kg: 312



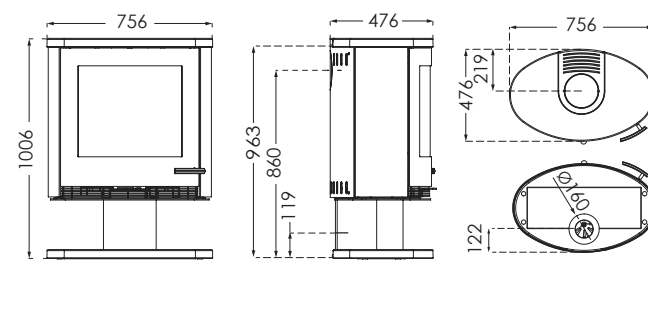
TT22R

Combustion chamber W/D: 570/300
Weight in kg: 162



TT22RP

Combustion chamber W/D: 570/300
Weight in kg: 192



*TT22HS: TT22HS-WH/TT22HS Black/TT22HS

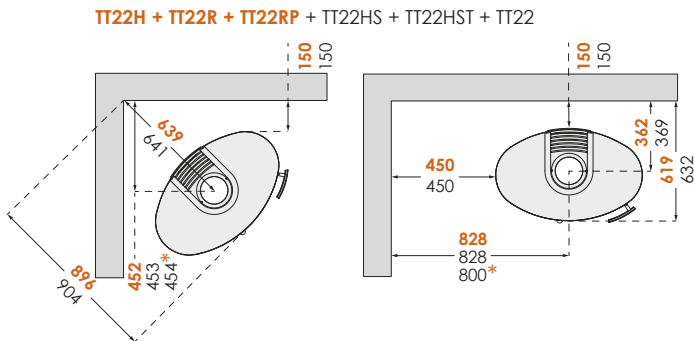
NB! All height dimensions are without adjusting feet. Measurements are in mm.

TT22 SERIES TECHNICAL SPECIFICATIONS

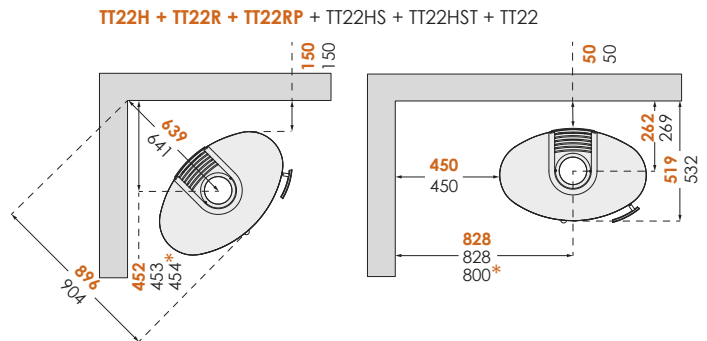
DISTANCE TO COMBUSTIBLE MATERIAL

TT22 SERIES

WITH UNINSULATED FLUE PIPE



WITH INSULATED FLUE PIPE



In order to avoid discolouration of painted and treated surfaces, TermaTech recommends the same distance from flammable materials as for non-flammable materials. This distance increases the convection itself around the stove and also eases cleaning. All distances relate solely to the distance of the stove from flammable materials. No account has been taken of national requirements for the use of stove flues or their distance from flammable materials.